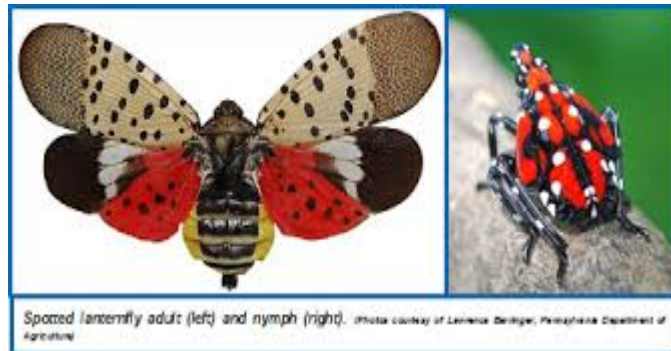


## Warren County Quarantine for the Spotted Lanternfly



On July 31, 2018 the New Jersey State Department of Agriculture announced a quarantine for Warren County due to the Spotted Lanternfly, an invasive insect. Business entities that routinely travel in and out of the quarantine area are required to take, and pass, training regarding the Spotted Lanternfly that is supplied for free by the Pennsylvania Department of Agriculture. The Department is asking for everyone's help in identifying areas where low numbers of this insect may be.

The insect is currently in a nymph stage and is likely to be red with white spots before becoming a full adult in mid-August. The pest prefers Tree of Heaven as its host, but can feed on 70 other different plant species, and causes destruction to many agricultural crops such as grapes.

Residents can email pictures of suspect insects to [SLF-plantindustry@ag.nj.gov](mailto:SLF-plantindustry@ag.nj.gov) or call the New Jersey Spotted Lanternfly Hotline at 1-833-223-2840 (BAD-BUG-0) and leave a message detailing your sighting and contact information.

For more information about the insect or quarantine, go to:

<https://www.nj.gov/agriculture/news/press/2018/approved/press180731.html>